

CITY OF

WHITEFISH

MT



SAFE STREETS FOR ALL ACTION PLAN

Questions? Contact:



Karin Hilding, PE
City of Whitefish
Project Manager
(406) 863-2450
khilding@cityofwhitefish.org



Sarah Nicolai, PE, PTP
Consultant
Project Manager
406-447-5038
snicolai@rpa-hln.com

Your input is needed to help improve **transportation safety in Whitefish!**



The City of Whitefish is developing an **Action Plan** focused on **improving safety** for all transportation users in Whitefish.

Safety Focus Areas:



Non-Motorists



Intersections



Inattentive Drivers



Speeds

Improving transportation safety involves a **comprehensive approach** leveraging a range of perspectives and technical expertise. Strategies and projects identified for Whitefish will require partnerships between engineers, law enforcement personnel, and educators, along with support from everyone in the community!

Timely response and coordination with emergency medical service providers also plays a critical role in reducing fatalities and serious injuries, and equity is an important consideration in addressing transportation disadvantage.

To review materials and to submit comments, please visit:

 WhitefishSafeStreets.com



LOOK OUT FOR EACH OTHER



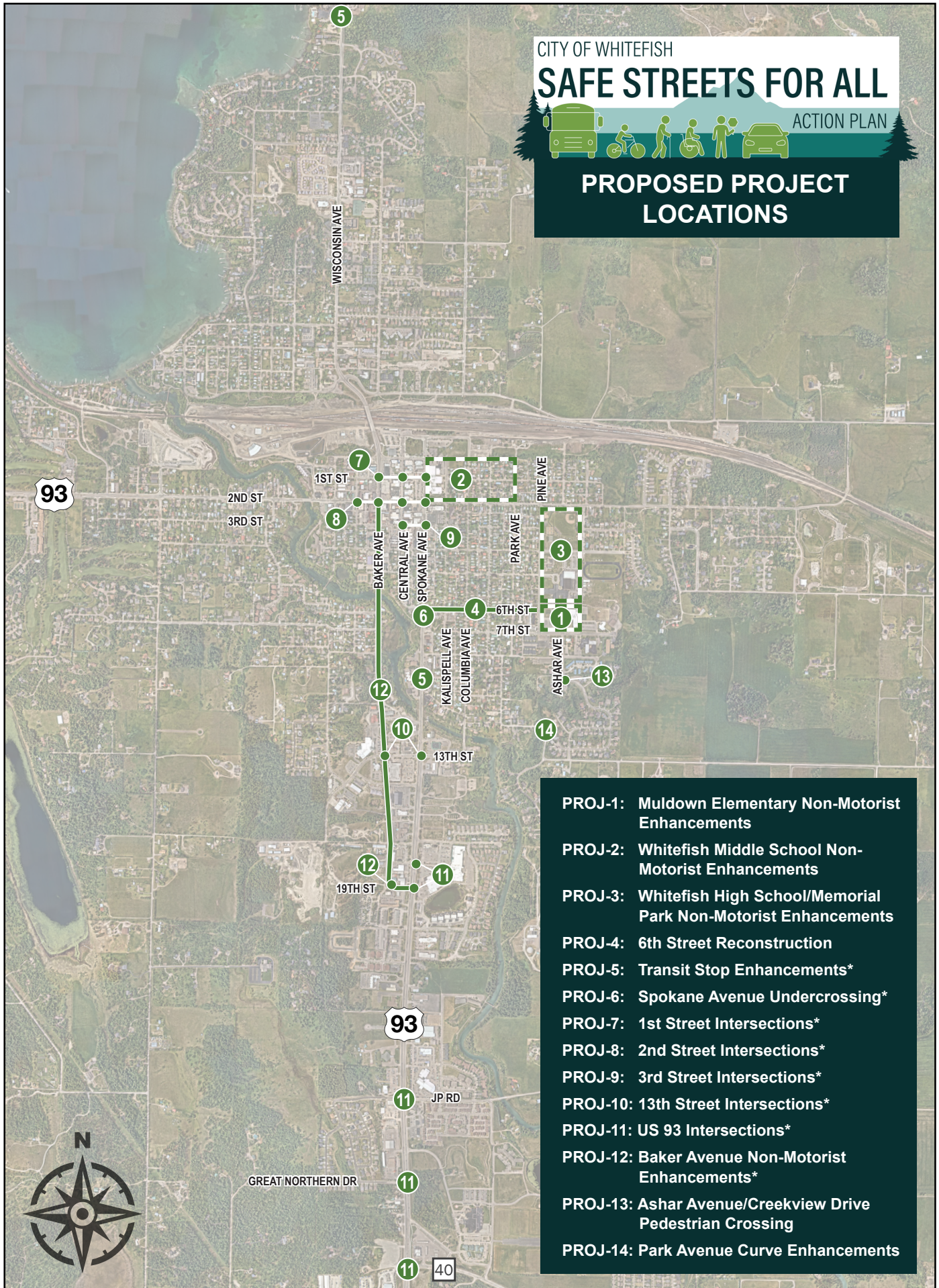
CITY OF WHITEFISH

SAFE STREETS FOR ALL

ACTION PLAN



PROPOSED PROJECT LOCATIONS



- PROJ-1: Muldown Elementary Non-Motorist Enhancements**
- PROJ-2: Whitefish Middle School Non-Motorist Enhancements**
- PROJ-3: Whitefish High School/Memorial Park Non-Motorist Enhancements**
- PROJ-4: 6th Street Reconstruction**
- PROJ-5: Transit Stop Enhancements***
- PROJ-6: Spokane Avenue Undercrossing***
- PROJ-7: 1st Street Intersections***
- PROJ-8: 2nd Street Intersections***
- PROJ-9: 3rd Street Intersections***
- PROJ-10: 13th Street Intersections***
- PROJ-11: US 93 Intersections***
- PROJ-12: Baker Avenue Non-Motorist Enhancements***
- PROJ-13: Ashar Avenue/Creekview Drive Pedestrian Crossing**
- PROJ-14: Park Avenue Curve Enhancements**

*Potential projects located on MDT routes would require additional study and coordination with MDT to proceed.